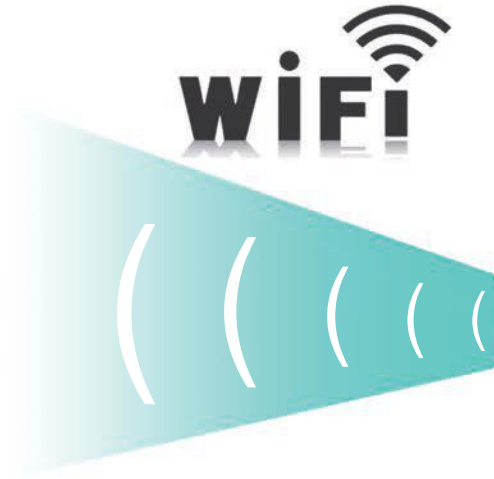




C10CT

Convex Color Doppler

Pocket Ultrasound System



Frequency

Depth

Mode

Applications

3.5-5MHz

90-305mm

B Mode
 B+M
 PW Doppler
 Color Doppler
 Power Doppler

Abdominal
 Emergency Cardiac
 Urology
 Obstetrics / Gynecology,
 Lung
 Kidney

Download our ultrasound software from App Store or Google Play



- ✓ Unlimited users
- ✓ Free software
- ✓ No hidden fees
- ✓ Support printing reports
- ✓ Chinese, English, Russian, Italian
Spanish, Portuguese(Brazil)

Software Controls

GN(gain)

D(depth)

ENH(enhancement)

DR(dynamic range)

F(frequency)

FocusPos

PRF

WF

Mode

8TGC

Biopsy

Annote

Page left/right up/down

Measurement

B: Length, Area/Circumference,
Angle, Trace, Distance GA(CRL, BPD, GS, FL, HC, AC)
EFW(BPD, FL)

B+M: Heart Rate, Time, Distance

B+PW: Velocity, Heart Rate(2), S/D, Depth



Package includes:

1* wireless probe

1* wireless charger

1* USB charger

1* wrist strap

1* plug

1* portable aluminium alloy box

Connection Type

WiFi (802.11n/20MHz/5G/450Mbps)

Probe built-in WiFi signal

Supporting Devices

Tablet, Smart phone, PC, etc

Working system

Android, IOS, Windows

Image save

jpg, avi, Mp4 and DICOM format

Buttons

3 programmable buttons

Lithium Battery

4200 mAh. 3.8V Support wireless charging

Working time: ≥3h, Standby time: ≥12h

Battery life 5-8years

Dimensions

158(h)x70(w)x30(d) mm

Net weight 239g

Elements 192

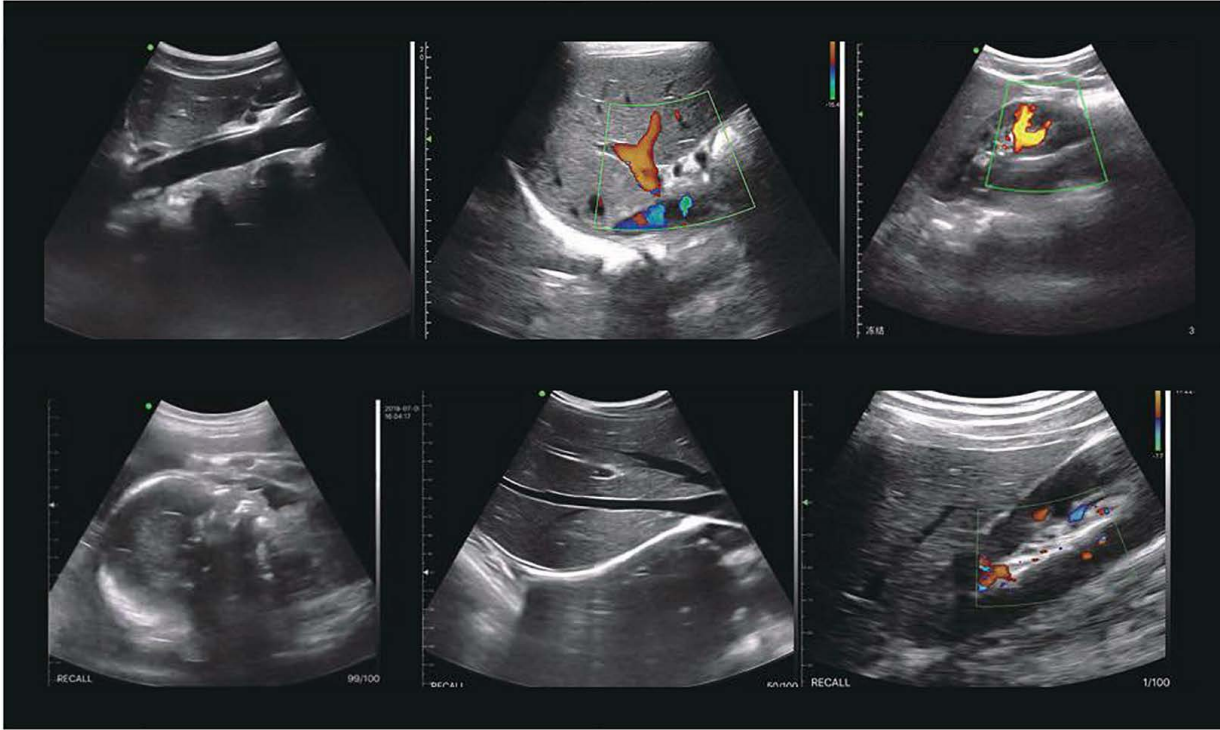
Footprint R60

Boot-up

Platform dependent, generally <5 seconds



Offer great images to everyone



DENİZLER MEDİKAL SAN. ve TİC. A.Ş.
K.bakkalköy Mh. Sevda Sk.
Seven Tower No:1 Kat:3
Ataşehir / İSTANBUL
T : +90 216 577 52 22 / 8218
F : +90 216 577 52 21

www.denizlermedikal.com

